

2 T800 Memory PCB

This section contains the following information.

IPN	Section	Page
220-01144-00	Parts List	2.2
	Mechanical & Miscellaneous Parts	2.2
	PCB Layout - Top Side	2.3
	PCB Layout - Bottom Side	2.4
	Circuit Diagram	2.5

T800 Memory PCB Parts List (IPN 220-01144-00)

How To Use This Parts List

The components listed in this parts list are divided into two main types: those with a circuit reference (e.g. C2, D1, R121, etc) and those without (miscellaneous and mechanical).

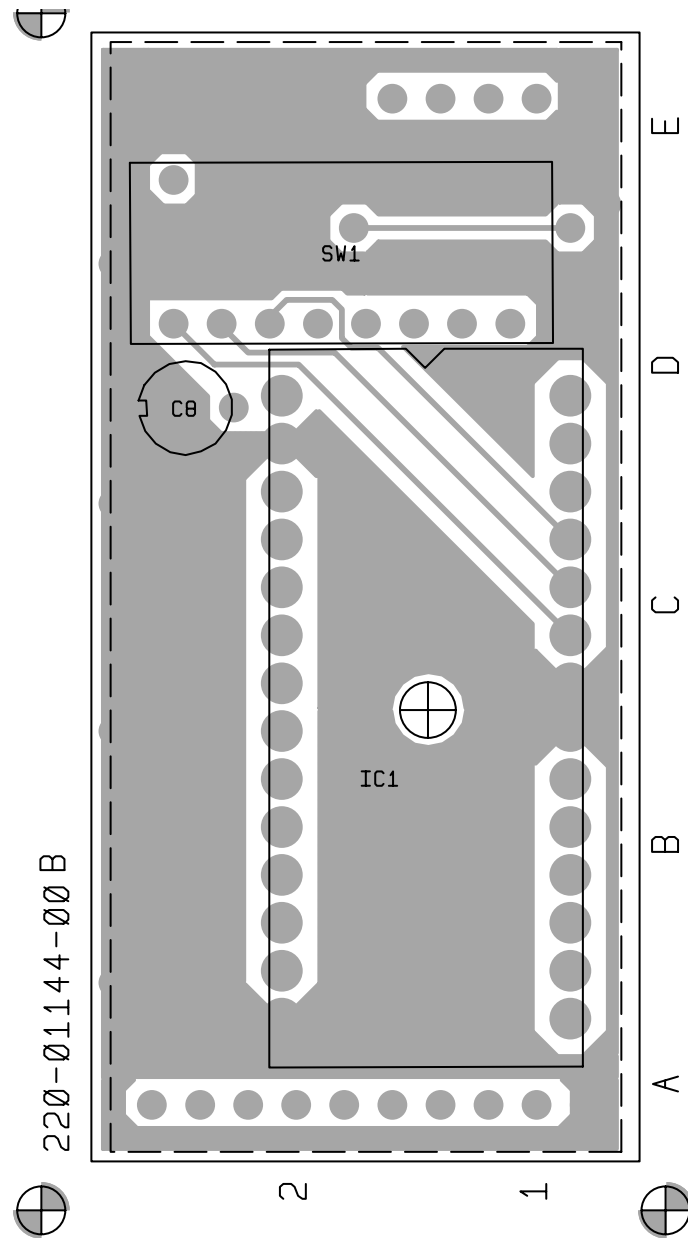
Those with a circuit reference are grouped in alphabetical order and then in numerical order within each group. Each component entry comprises three or four columns: the circuit reference, variant (if applicable), IPN and description. A number in the variant column indicates that this is a variant component which is fitted only to the product type listed.

The miscellaneous and mechanical section lists the variant and common parts in IPN order.

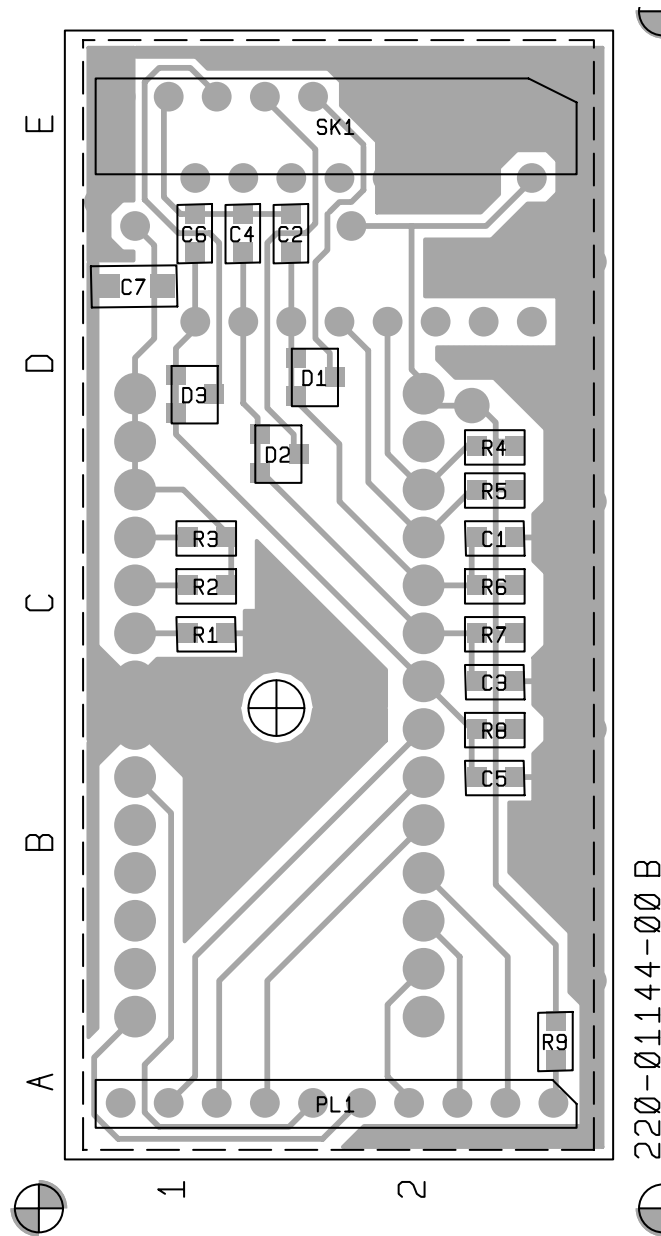
Parts List Amendments

There were no amendments to the parts list at the time of publication.

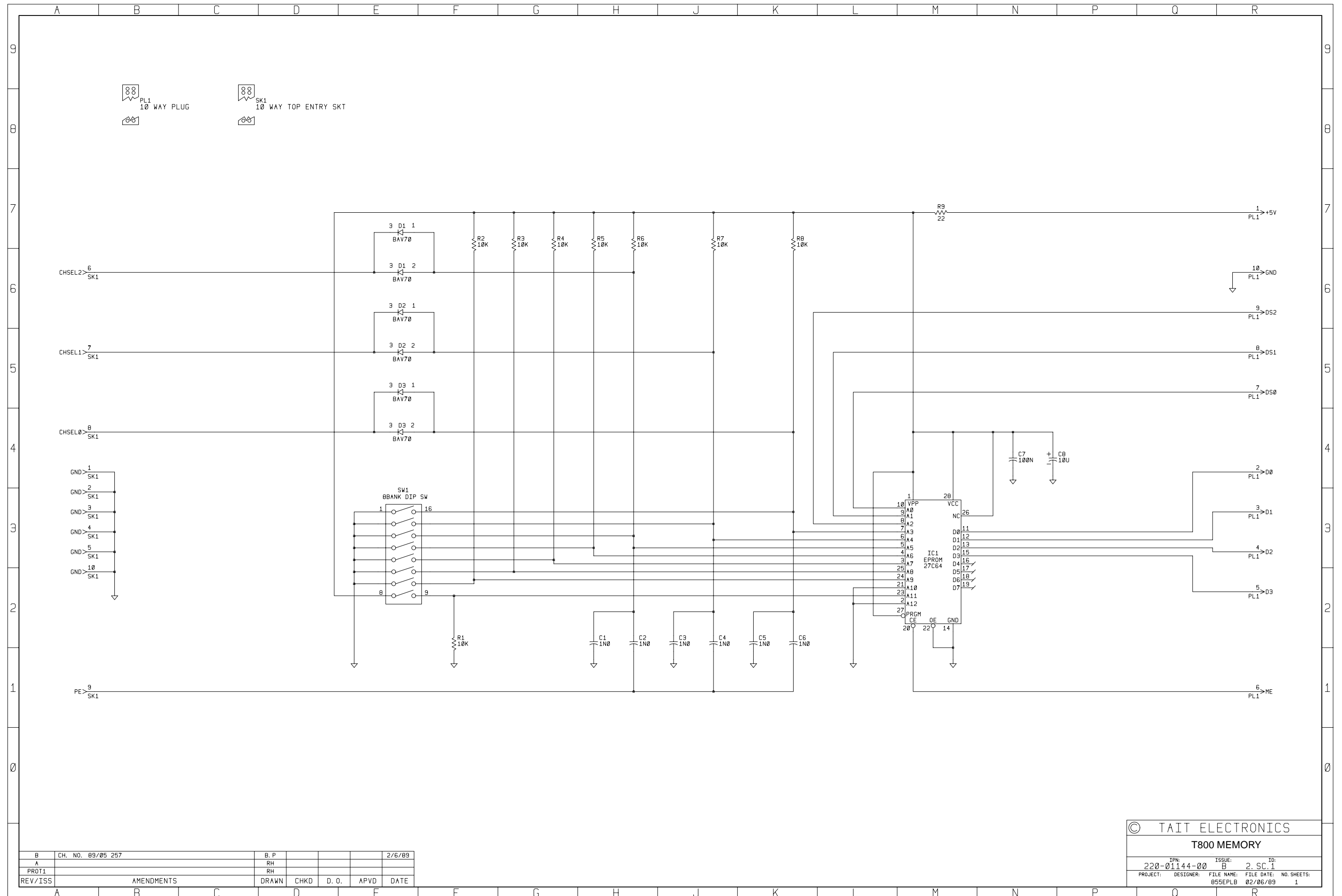
Ref	Var	IPN	Description	Ref	Var	IPN	Description
C1		015-24100-08	CAP CER 0805 CHIP 1N 10% X7R 50V				
C2		015-24100-08	CAP CER 0805 CHIP 1N 10% X7R 50V				
C3		015-24100-08	CAP CER 0805 CHIP 1N 10% X7R 50V				
C4		015-24100-08	CAP CER 0805 CHIP 1N 10% X7R 50V				
C5		015-24100-08	CAP CER 0805 CHIP 1N 10% X7R 50V				
C6		015-24100-08	CAP CER 0805 CHIP 1N 10% X7R 50V				
C7		015-06100-08	CAP CER 1206 CHIP 100N 10% X7R 50V				
C8		025-08100-02	CAP TANT BEAD 10M 10% 16V				
D1		001-10000-70	(S) DIODE SMD BAV70 DUAL SW SOT-23 COM-CATH				
D2		001-10000-70	(S) DIODE SMD BAV70 DUAL SW SOT-23 CO CATH				
D3		001-10000-70	(S) DIODE SMD BAV70 DUAL SW SOT-23 COM CATH				
IC1		002-00018-04	(S) IC 27C64 CMOS 8K*8 UV EPROM 250NS - 150NS				
PL1		240-00020-57	HEADER 10 WAY 1 ROW PCB MTG				
R1		036-15100-00	RES M/F 0805 CHIP 10K 5%				
R2		036-15100-00	RES M/F 0805 CHIP 10K 5%				
R3		036-15100-00	RES M/F 0805 CHIP 10K 5%				
R4		036-15100-00	RES M/F 0805 CHIP 10K 5%				
R5		036-15100-00	RES M/F 0805 CHIP 10K 5%				
R6		036-15100-00	RES M/F 0805 CHIP 10K 5%				
R7		036-15100-00	RES M/F 0805 CHIP 10K 5%				
R8		036-15100-00	RES M/F 0805 CHIP 10K 5%				
R9		036-12220-00	RES M/F 0805 CHIP 22E 5%				
SW1		230-00010-19	SWITCH*8 SPST DIP PKG				
SKT1		240-04020-57	SKT 10 WAY 1ROW PCB MTG TOP ENTRY				
		220-01144-00	PCB T855/856/857 MEM				
		240-04020-35	SKT 28 PIN DIL IC LO PROF IC1				
		365-00011-38	LABEL STATIC WARNING YELLOW A4A315				
		365-00011-54	LABEL WHITE RW1556/2 SPECIAL ADHESIVE				
		399-00010-86	BAG STATIC SHIELDING 127X203MM				
		410-00010-64	PKG HEADER CARD A3M2392				



T800 Memory PCB (IPN 220-01144-00) - Top Side



T800 Memory PCB (IPN 220-01144-00) - Bottom Side



B	CH. NO. 09/05 257	B. P			2/6/89
A		RH			
PROT1		RH			
REV/ISS	AMENDMENTS	DRAWN	CHKD	D. O.	APVD DATE

© TAIT ELECTRONICS					
T800 MEMORY					
IPN:	220-01144-00	ISSUE:	B	SC.:	1
PROJECT:	DESIGNER:	FILE NAME:	FILE DATE:	NO. SHEETS:	
		855EPLB	02/06/89	1	

